

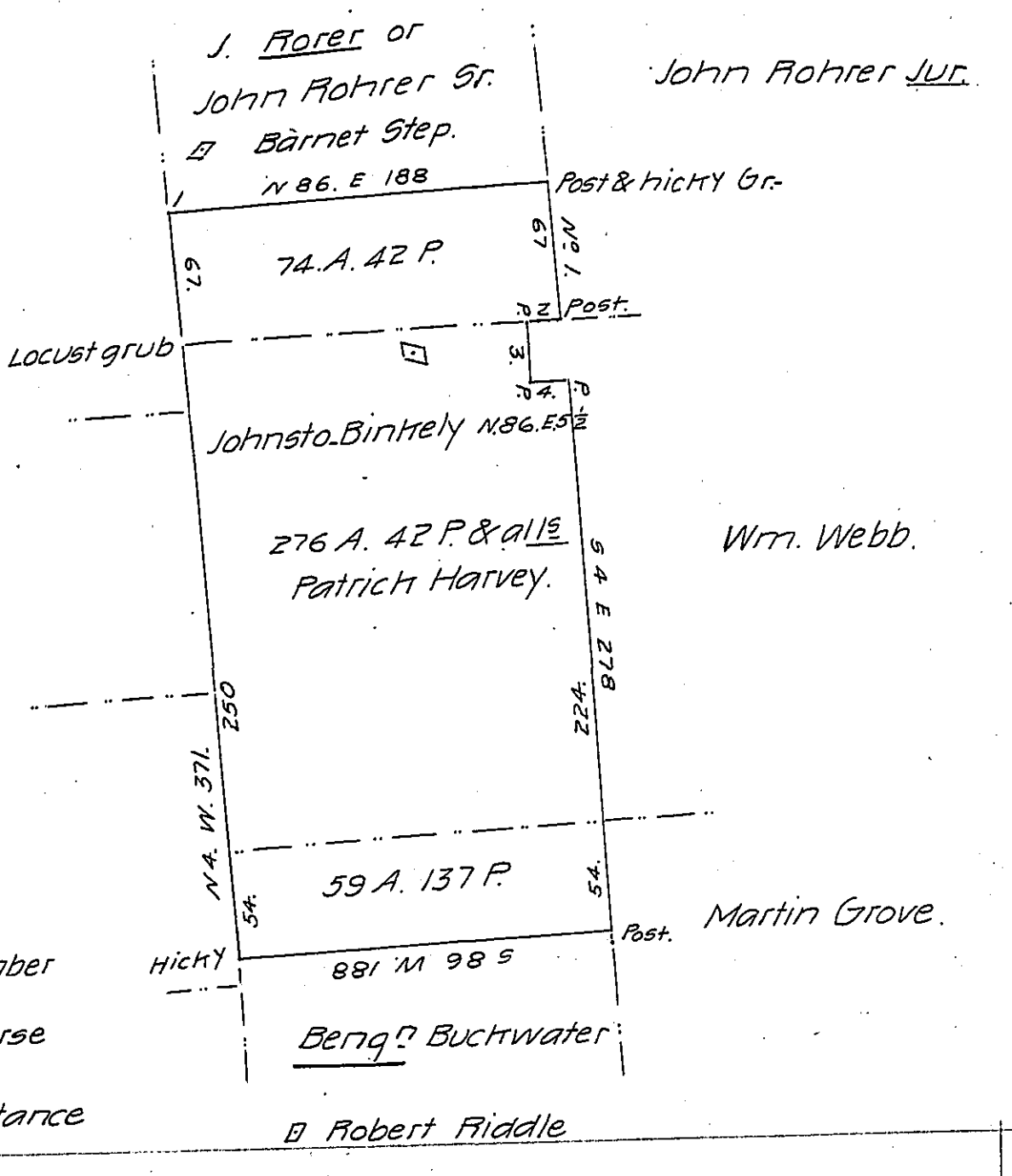
FORM No. 1.

Donation Land.

No. 246.

No. 245.

No. 244.



1	5.4 E	67
2	5.86 W	52
3	5.4 E	26
4	N 86 E	52

A Draught of a tract of Land Surveyed to Patrick Harvey on a Warrant granted to him dated 28th day of September 1815 Containing four hundred and ten acres & sixty one perches & alls &c. Embracing a part of three Old Warrants as marked by the dotted lines, to wit, Includin on the North end a part of a Warrant in the name of John Rohrer of seventy four acres and forty two perches &c. Next on the South of the above by Johnston Binkely includeing two hundred and seventy six acres and forty two perches &c. and on the South a part of Benjamin Buckwater of fifty nine acres and one hundred and thirty seven perches. Surveyed and Examined the Interferences 26th of Febr'y 1818. Barnet Gilleland D.S.

The abo tract of land is situate in Buffalo Township Butler County on the Waters of Bull Creek &c.

To Jacob Spangler Esq. S.G.  
 IN TESTIMONY that the above is a copy of the original remaining on file in the Department of Internal Affairs of Pennsylvania, made conformably to an Act of Assembly approved the 16th day of February, 1833, I have hereunto set my Hand and caused the Seal of said Department to be affixed at Harrisburg, this twenty sixth day of July 1906.

*Isaac Brown*  
 Secretary of Internal Affairs.